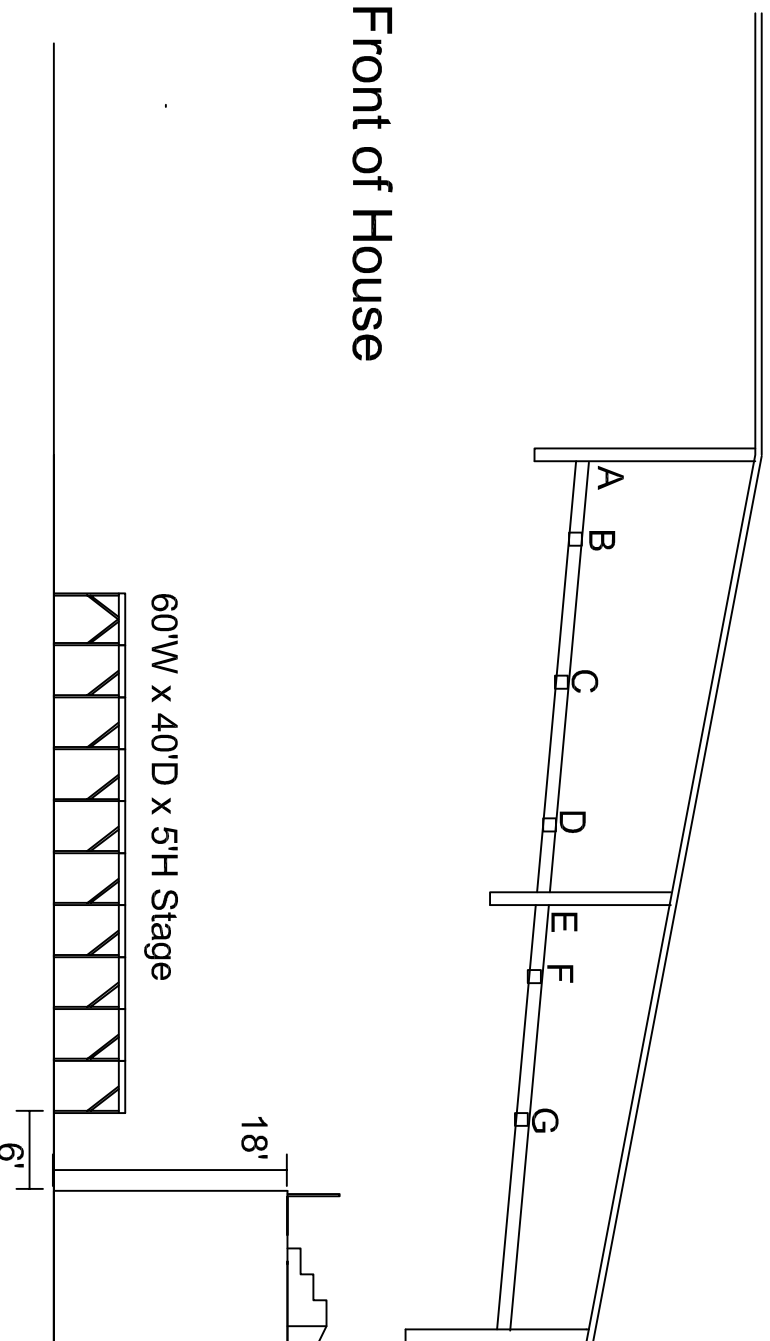


UIC Pavilion

Cross Sectional View - East End Rigging Steel



Front of House

Truss Elevations:
- Elevations from Bottom of steel to main floor.

- A = 37'0"
- B = 39'8"
- C = 38'7"
- D = 37'8"
- E = 33'7"
- F = 36'6"
- G = 35'6"
- H = 37'0"
- J = 45'0"