

MAXIMUM ALLOWABLE SUSPENDED LOAD:
 1750 LBS IN ANY SHADED REGION, OR
 3500 LBS IN ANY 4 SHADED REGIONS
 (14k TOTAL LOAD IN SYSTEM)

PARTIAL PLAN AT CENTRAL GRILLAGE AREA
 SCALE: 1/16" = 1'-0"



NORTH



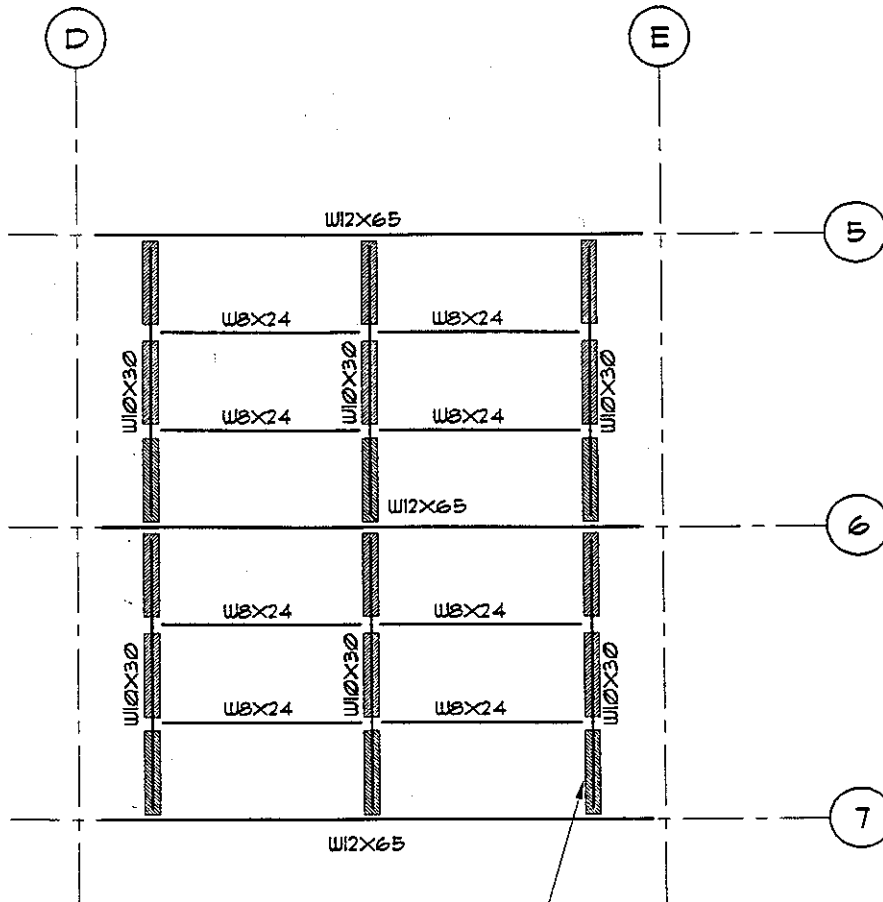
PROJECT NORTH

HKSE

Halvorson & Kaye
Structural Engineers, PC
 400 West Erie St., Suite 503
 Chicago, Illinois 60610
 Tel: 312 787 HKSE (4573)
 Fax: 312 787 4558
 E-mail: HKSE@msn.com

**ALLOWABLE HANGING LOADS
 AT CENTRAL GRILLAGE AREA**

SSK - 6

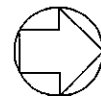


MAXIMUM ALLOWABLE SUSPENDED LOAD:
 750 LBS IN ANY SHADED REGION
 (13.5 TOTAL LOAD IN SYSTEM)

PARTIAL PLAN AT CENTRAL GRILLAGE AREA
 SCALE: 1/16" = 1'-0"



NORTH



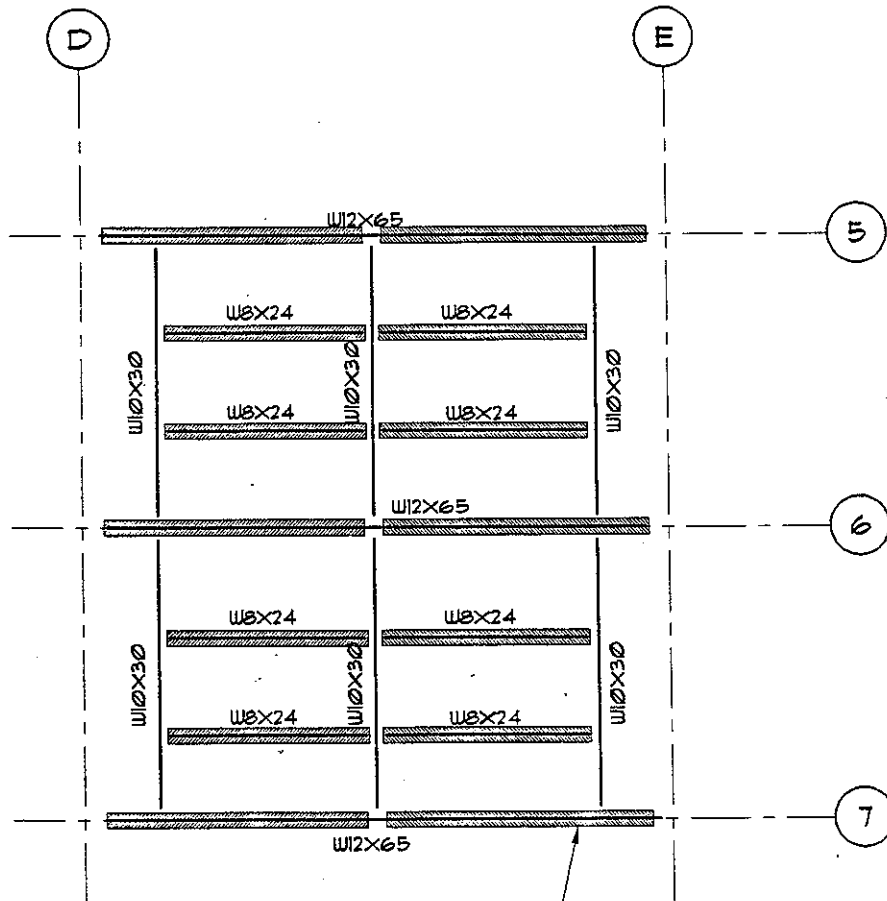
PROJECT NORTH

HK-SE

Halvorson & Kaye
 Structural Engineers, PC
 400 West Erie St., Suite 503
 Chicago, Illinois 60610
 Tel: 312 787 HKSE (4573)
 Fax: 312 787 4558
 E-mail: HKSE@msn.com

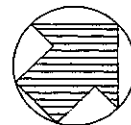
ALLOWABLE HANGING LOADS
 AT CENTRAL GRILLAGE AREA

SSK - 0

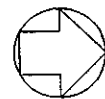


MAXIMUM ALLOWABLE SUSPENDED LOAD:
 1000 LBS IN ANY SHADED REGION
 (14K TOTAL LOAD IN SYSTEM)

PARTIAL PLAN AT CENTRAL GRILLAGE AREA
 SCALE: 1/16" = 1'-0"



NORTH



PROJECT NORTH

HK-SE

Halvorson & Kaye
 Structural Engineers, PC
 400 West Erie St., Suite 503
 Chicago, Illinois 60610
 Tel: 312 787 HKSE (4573)
 Fax: 312 787 4558
 E-mail: HKSE@msn.com

ALLOWABLE HANGING LOADS
 AT CENTRAL GRILLAGE AREA

SSK - 6